



Main Features:-

- ◆ PN6/10/16/25/40 ANSI 150 & ANSI 300 ½" to 3"
- ◆ PN10/16/25/40 ANSI 150 & ANSI 300 4"
- ◆ Stainless Steel Body, Disc & Spring
- ◆ Max Pressure PN52
- ◆ Metal Seated

*Temperature and pressure determined by valve body, seat etc.



Suitable Applications & Approvals:



INDUSTRY

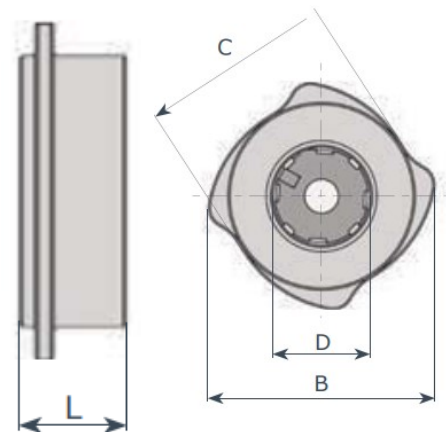
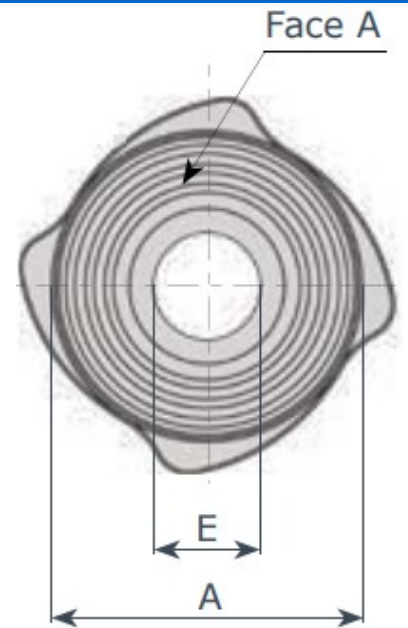
30140	30142
EPDM Seal	Viton Seal
30141	30143
NBR Seal	PTFE Seal

SERIES: 30139

MANUFACTURER: **AVOL**
INDUSTRIAL VALVES

VALVE DIMENSIONS

DN	A	B	C	D	E	L	Kg
15	43	54	45	23	14	17	0.11
20	48	64	54	28	19	20	0.18
25	58	71	63	36	25	22	0.26
32	68	81	72	50	31	28	0.40
40	75	93	82	58	38	32	0.55
50	94	110	95	71	48	40	1
65	113	130	115	86	62	46	1.5
80	129	149	131	105	77	50	2
100	159	181	160	130	95	60	3.2



Name	Material
Body	AISI 316
Disc	AISI 316L
Spring	AISI 316
Top Ring	AISI 316L
Seat	Metal/ EPDM/ NBR/ Viton/ PTFE

**contact sales for the metal seal version*

Seat Material Temperature Range

Metal	0°C to 250°C
NBR	0°C to 95°C
PTFE	0°C to 200°C
EPDM	0°C to 130°C
Viton	0°C to 200°C

T +44 (0)1386 552369

E sales@allvalves.co.uk

W www.allvalves.co.uk

F +44 (0)1386 554227

